



XCT8™

VRF with the power of



XCT8™



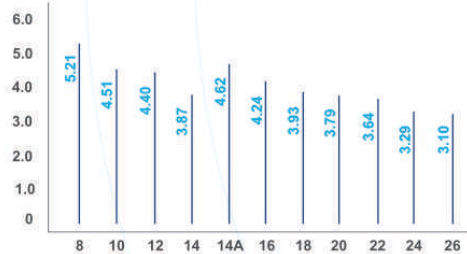
8 - 14HP

VRF with the power of 8

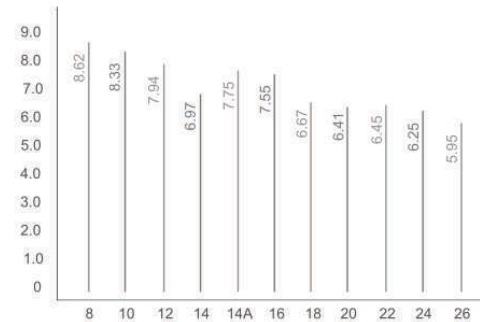
Carrier is introducing the new range of highly efficient and flexible VRF, designed for easy installation and service. The Carrier XCT8 is power packed with 8 key features that make this the ideal choice for your buildings.

1 High efficiency

The all new Carrier XCT8 utilises new and improved highly efficient core technologies, resulting in greater energy efficiency and performance.



100% load COP up to 5.2



50% part load COP up to 8.6

2 Flexible connectivity and combinations

The all new Carrier XCT8 exceeds the limits of VRF for maximised project coverage, resulting in a combination that offers options on efficiency, space and cost. Whatever your requirement, Carrier XCT8 can be customised to deliver the best result for your building.

4,000 combination patterns

Free combination

1,200m max

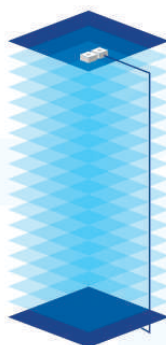
Long piping length

110m max

High piping lift

Max 200% combination

High diversity



Total 4000 combination pattern is available

Standard (Space-saving)

COP: 3.10
Width: 2,600 mm.



Max. Highest efficiency

COP: 4.87
Width: 5,630 mm.



Balance (Space-saving)

COP: 3.95
Width: 3,610 mm.



Balance (Moderate)

COP: 4.09
Width: 4,020 mm.



Balance efficiency

COP: 4.62
Width: 5,030 mm.



14A - 26HP

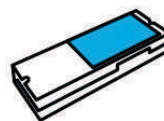
3

Easy Service

The all new Carrier XCT8 gives a comprehensive service solution that facilitates the reliable operation of the unit and easy maintenance.



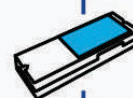
Direct Access
of system data
via outdoor unit



Self Recording
of system operation
using link adaptor



Indoor Unit



Access system data
via indoor unit using
link adaptor

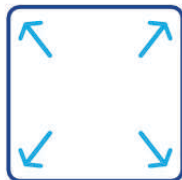
4

ODU capacity 120 HP

8

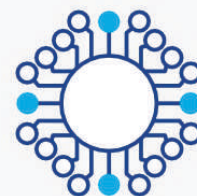
IDU connection 128

5



Large System Capacity
120 HP max.
with 5 condensing
unit connections

Multiple Units
21 different indoor unit
types of 136 capacities
from 0.8HP to 20HP



6

Auto refrigerant charge

8

Refrigerant cooled PCB

7



Auto refrigerant charge helps refrigerant charging with more accuracy and reliability. It also reduces installation workload and time.

Refrigerant cooling brings down temperature of electronic parts on inverter. This design enables reliable cooling at high ambient temperature up to 52°C



DX-AHU Inverter

8

Healthy Buildings Solution



DX-AHU Inverter

Carrier XCT8 comes with the possibility of DX-AHU connectivity that makes it capable of direct intake of 10% to 100% fresh air and ensures optimum IAQ levels. It can easily be incorporated with HEPA filter and UV lamp.

Carrier



ISO 9001
ISO 14001
ISO 45001

QMS18026/1686
EMS18012/471
OHSMS19061/078

